



Segh Vo'Heghpu Class Specifications

Production Data:

Origin:	Mastocal shipyards
Class and Type:	Segh Vo'Heghpu penal transport ship
Year Launched:	2142

Hull Data:

Structure:	25
Size/Decks:	5/5
Length/Height/Beam:	250/25/60 Meters

Complement:

Crew:	20
Passengers:	40

Operational Data:

Transporters:	1 Standard
Cargo Units:	40
Shuttlebay:	1 A
Shuttlecraft:	5 size worth
Tractor Beams:	1 FV, 1A
Separation System:	None
Sensor System:	Class 2 [+2/C]

Operations System:	Class 3 [0]
Life Support:	Class 3 [0]
Propulsion System:	
Impulse Engines:	K-HEU-1 [.4c] [C]
Warp Drive:	STN-3 [Warp, 3/4/6]

Tactical Data:

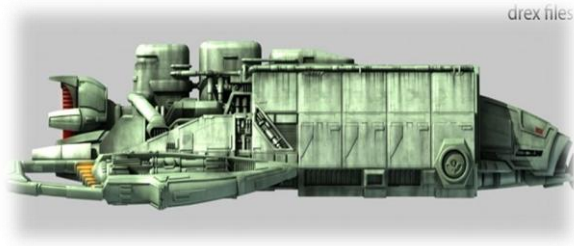
Disruptor banks:	KD-10a [X4/B]
Penetration:	4/3/3/0/0
Photon Torpedoes:	FST mk III [X2/B]
Penetration:	4/4/4/4/4
Deflector Shield:	PFF 2a [B]
Protection Threshold:	13 1/3

Miscellaneous Data:

Manoeuvre Modifiers:	+1C, +3H, +1T
Traits:	Flaw Outdated. Edge Battle tested

History:

The Segh Vo'Heghpu class which literally means Barge of the Dead was a older style transport used by smaller houses for cargo runs and prison transports. For klingons of a lower house or no house at all serving on a Segh Vo'Heghpu represented the only opportunity to gain a sliver of honour. The Captains of these vessels maintained contacts outside of the Klingon sphere of influence and would use these to bring persons of interest to the empire for judgement. The Segh Vo'Heghpu was not a military ship built by smaller houses and sometimes used for system defence.



Klingon small transport
Specifications

Production Data:

Origin:	Klingon Empire
Class and Type:	Klingon Small transport
Year Launched:	2142

Hull Data:

Atmospheric Capable:	Yes
Structure:	25
Size/Decks:	3/2
Length/Height/Beam:	55/25/20 Meters

Complement:

Crew:	2
Passengers:	53

Operational Data:

Transporters:	4 Standard, 4 Emergency
Cargo Units:	40
Shuttlebay:	1 A
Shuttlecraft:	5 size worth
Tractor Beams:	1 FV, 1A

Separation System:	None
Sensor System:	Class 2 [+2/C]
Operations System:	Class 3 [0]
Life Support:	Class 3 [0]
Propulsion System:	
Impulse Engines:	K-HEU-1 [.4c] [A]
Warp Drive:	STN2 [Warp, 2/3/4.5]

Tactical Data:

Deflector Shield:	PFF 1 [A]
Protection Threshold:	12 1/1

Miscellaneous Data:

Manoeuvre Modifiers:	-1C, +2H, -1T
Traits:	Flaw Jury Rigged [propulsion]

History:

These small transport vessels tended to be 'granted' to protectorates of the empire. In exchange for protection and 'trade' the various races who found themselves under Klingon protection had to supply a set amount as tribute to the empire. This tribute could vary depending on the house which was responsible for the region in which the 'protectorate' fell. Some houses took this position seriously and acted in a rough grandfatherly way others exploited the natural resources of these worlds and lost interest in them once they were exhausted of anything useful. One such vessel was used by a group of refugees whose world had been stripped of nearly everything.



Klingon Large Cargo ship
Specifications

Production Data:

Origin:	Klingon Empire
Class and Type:	Large Cargo Ship
Year Launched:	2365

Hull Data:

Structure:	35
Size/Decks:	7/8
Length/Height/Beam:	500/200/80 Meters
Complement:	20

Operational Data:

Transporters:	4 Standard, 4 Emergency
Cargo Units:	Bulk: 70 Dry: 40 Liquid: 20
Shuttlebay:	1 A
Shuttlecraft:	7 size worth
Tractor Beams:	1 FV, 1A
Separation System:	None
Sensor System:	Class 2 [+2/C]
Operations System:	Class 3 [0]

Life Support: Class 3 [0]

Propulsion System:

Impulse Engines: K-HEU-5 [.8c] [C]
Warp Drive: STN7 [Warp, 6/8/9]

Tactical Data:

Deflector Shield: FSQ 7 [D]
Protection Threshold: 17 2/4

Miscellaneous Data:

Manoeuvre Modifiers: +3C, +0H, +0T
Traits: Hardened System
[Deflector Shield]

History:

The Large Bulk freighter is a military transport. It is nearly the size of a Galaxy class and dedicated entirely to running cargo. These vessels are designed with redundant armour and are sluggish. They lack defensive weaponry relying entirely on an escort.

Notable Ships:

IKS Partok Attacked by Dominion forces took part in a relief convoy escorted by the IKS Rotarran



G2 Survey ship Specifications

Production Data:

Origin:	Klingon Empire
Class and Type:	G2 Class Survey ship
Year Launched:	2152

Hull Data:

Structure:	15
Size/Decks:	3/2
Length/Height/Beam:	70/25/20 Meters

Complement:	12
-------------	----

Operational Data:

Atmospheric Capable:	yes
Transporters:	1 Standard, 1 Emergency
Cargo Units:	30
Shuttlebay:	1 A
Shuttlecraft:	1 size 1 worth
Tractor Beams:	1 FV, 1A
Separation System:	None
Sensor System:	Class 2 [+2/C]

Operations System:	Class 3 [0]
Life Support:	Class 3 [0]
Propulsion System:	
Impulse Engines:	K-HEU-2 [.5c] [B]
Warp Drive:	STN 2 [BB] [Warp, 2/3/4.5]

Tactical Data:

Disruptor Cannon:	KC 30 [X2/B]
Penetration:	3/2/2/0/0
Deflector Shield:	PFF 2a [B]
Protection Threshold:	13 1/3

Miscellaneous Data:

Manoeuvre Modifiers:	+2C, +0H, +2T
Traits:	Hardened System [Deflector Shield]

History:

The G2 was a 12 man Klingon survey vessel used for exploration and location of resources for exploitation. In fleet actions they are used to gather tactical data and harassment. One such vessel was stolen by human 'augments' and eventually destroyed by Enterprise. These vessels continued to serve well beyond their lifespan with one being used to supply arms to a Capellan tribe. Montgomery Scott of the USS Enterprise played cat and mouse with one whilst the captain and first officer were off ship.